

Bathrooms & Kitchens



Cupboard Doors – Perfect for Painting

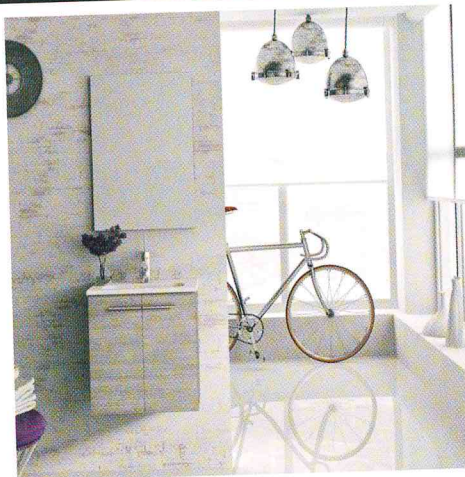
Offering the perfect paintable cupboard door solution, The Cupboard Door Company has recently introduced impermeable doors to its high quality trade product offering. Perfect for kitchens and bathrooms, doors manufactured from Tricoya® benefit from a 50 year guarantee on the core material.

Manufacturing quality MDF doors to order, The Cupboard Door Company specialises in one-piece construction of handcrafted raised and fielded panel doors and drawer fronts, Shaker framed doors and inset frame systems.

Through substantial investment in CNC technology and clever adaptation of manufacturing techniques, even traditional five-piece doors and in-frame doors (complete with frame) are made from one solid piece of MDF, in any size up to 2420 x 1200 mm.

If your customer's kitchen is in a painted style, you can be sure every door will be perfectly square for a perfect fit every time and there will be no movement or cracking of the finished door.

T: 01323 899944 W: www.cupboarddoor.co.uk



'Street' Style - NEW Royo Street furniture from Frontline Bathrooms

Frontline Bathrooms' new and exclusive Street furniture; manufactured by leading European supplier Royo Group, ties in to a number of top design trends.

With houses getting smaller, and the average size of bathrooms decreasing due to a rising number of people adding second wash spaces, the Street furniture has been designed to slot into tighter spots. The Street Furniture Pack and Street Ceramic Basin Unit & Mirror are both wall hung in design; freeing up the floor and helping create the illusion of extra space. The units in each are also small in scale; measuring 600mm and 500mm respectively. The minimalist, pared-back profiles of each piece in the collection are also perfect for petite spaces, as are the 'cool' colour options available; the charcoal grey Anthracite and pale Sandy Grey.

For further information visit:
www.frontlinebathrooms.co.uk



Max value for retailers with Max-Top

Worktop specialist Max-Top has announced the launch of a new initiative that will offer UK kitchen and bathroom retailers free Max-Top Quartz displays.

The company is so confident with the quality of its product and market demand that it will be footing the bill of display units up and down the country. Stephen Moss, managing director of Max-Top, commented: "Max-Top is completely unique in its offering looks fantastic, is incredibly hard-wearing, whilst being so light-weight it only takes one person to install it. "We feel strongly that the best way to translate the USP's is by letting the product talk for itself and this is why we are offering retailers free displays."

The modular quartz surfaces are suitable for both kitchen and bathroom environments and at the end of 2014 were installed in a number of bathrooms at the luxury 5* Alexan House Hotel and Utopia Spa in Sussex.

Max-Top Quartz, which offers a 25 year guarantee. For more information www.maxtopquartz.co.uk or visit Max-Top YouTube page to watch a short installation video.



New Roxton Suite from Lecico

The new Roxton suite from Lecico is a ceramic design of Victorian styling epitomizing traditional English design but with all the benefits of modern technology. Featuring period detailing on its basin splash-back and stepped design around the basin rim that's reflected through the Roxton family. The collection includes a 53cm two top hole basin with full pedestal, and a low level or close coupled pan option. It can be mixed and matched with Lecico's New Hamilton family adding a high level cistern option too.

Lecico, who have been manufacturing ceramic since 1959 for a worldwide market, has a new brochure for 2015 to support all their products, which can be viewed at <http://brochure.lecico.co.uk/>

Their UK office is based in Bedford and they can be contacted on tel: 01234-244030 or info@lecico.com.



On The Level - Complete Wet Floors

A Complete Wet Floor from On The Level is a made-to-measure interlocking flooring system incorporating a bespoke showering area with a choice of waste position. The complete flooring system is designed and constructed in the factory and delivered ready for a quick and easy installation, saving labour time on site, plus it can be designed to function as a template to take internal walls. 24mm thick at the perimeter edge, the complete floor can be cut and trimmed easily on site if any minor adjustments need to be made.

Suitable for new build projects and refurbishments and available with a square grating, linear grating or vinyl sheet flooring finish for a level access wet room.

For further information visit: www.onthelevel.co.uk or Tel: 01525 373202



Max-Top launches specialist installation toolkit

Kitchen worktop specialist Max-Top has announced the launch of a specialist blade and drilling tool designed specifically for the installation of its revolutionary Max-Top Quartz work surface range.

Essential when cutting or drilling is required, the features a diamond-encrusted blade for clean, cutting and vacuum-brazed hole saws for accurate precision.

The toolkit also includes electroplated diamond pads used for sanding surface edges and a bevel cone to create decorative edging on all quartz work. Stephen Moss, managing director of Max-Top, "The Max-Top Quartz installation toolkit is the latest series of exciting developments for our company demonstrates our ongoing support for installers in the

For more information visit: www.maxtopquartz.co.uk